



# Schooling inequality on standardized test scores and extended journey: an analysis of Pernambuco (Brazil) high school public system\*

Hugo Augusto Vasconcelos Medeiros <sup>a</sup>   
Ruy de Deus e Mello Neto <sup>b</sup> 

## Abstract

This paper analyzes the relationship between full-time journeys and schooling inequality in Pernambuco, Brazil. Using standardized test scores on the school level, we tested the inverted u-curve hypothesis proposed initially by Simon Kuznets in 1955 and adapted with a focus on schooling expansion and inequality by Rati Ram in 1990. We build a panel data analysis to perform the test, with data aggregated by region and scores on standardized tests as the output variable. Initially, the hypotheses described an inverted U-curve correlating schooling effectiveness and inequality. However, we have found that the relationship follows a regular U shape. It is also inferable that the equity of the result is more connected to the effects of the diversity of school typology, the location of schools, and the way the region is developed.

**Keywords:** Extended School Day. Inequality. Educational Effectiveness.

---

\* The entire dataset supporting this study's results will be made available in an appropriate repository, along with the analysis scripts.

<sup>a</sup> Secretaria de Planejamento, Gestão e Desenvolvimento Regional, Recife, PE, Brasil. / Universidade Federal de Pernambuco, Recife, PE, Brasil.

<sup>b</sup> Universidade Federal do Ceará, Fortaleza, CE, Brasil.

Received: Apr. 30 2023

Accepted: Mar. 20 2024

# 1 Introduction

The Brazilian National Education Plan (PNE) 2014-2024<sup>1</sup> advocates the necessity of providing “full-time Education in at least 50% (fifty percent) of the public schools to attend at least 25% (twenty-five percent) of the students from the basic level of Education” (free translation).

The Brazilian Federal Government, by Provisional Measure (MP) n° 746<sup>2</sup>, converted into law n° 13,415<sup>3</sup>, created a policy to increase the number of full-time public schools in the country. It established that Brazilian states would offer full-time schooling, finding the best model to adopt - considering the local context - to increase the number of students and schools with extended journeys.

Even with some particularities (Araújo *et al.*, 2020; Battistin and Meroni, 2016; Castanho and Mancini, 2016; Fukushima, Quintão and Pazello, 2002; Huebener, Kuger, and Marcus, 2017; Rosa *et al.*, 2020; Schüpbach, 2014) show that the full-time schooling policy positively affected students’ scores on a standardized test in mathematics and language. In a general approach, increasing time in school works as a tool for schooling effectiveness (Agüero *et al.*, 2021; Kawahara, 2019; Valeria, 2013; Vidigal and Vidigal, 2022).

It is, however, important to notice the existence of a trend to represent full-time schools as the salvation for Education, mixing the right that low-income families have to quality Education and a comprehension that full-time schools have no contradictions or externalities on Education systems (Castanho and Mancini, 2016).

In the same path, Silva and Jófili (2022) say that the dominant discourse about quality in Education associates good Education and good performance in standardized tests, concealing other meanings of quality and reinforcing the perspective of a salvationist full-time Education since it tends to produce better results.

In the Brazilian case, full-time schools tend to attract a homogeneous profile of students since the socioeconomic profile and demographic characteristics significantly impact school choice (Bae; Cho; Byun, 2019; Costa; Kolinski, 2012; Koslinski; Alves; Lange, 2013). Students with work obligations and social vulnerability tend to face difficulties attending full-time schools (Vieira *et al.*, 2016).

---

<sup>1</sup> [http://www.planalto.gov.br/ccivil\\_03/\\_ato2011-2014/2014/lei/l13005.htm](http://www.planalto.gov.br/ccivil_03/_ato2011-2014/2014/lei/l13005.htm)

<sup>2</sup> <https://www2.camara.leg.br/legin/fed/medpro/2016/medidaprovisoria-746-22-setembro-2016-783654-publicacaooriginal-151123-pe.html>

<sup>3</sup> [https://www.planalto.gov.br/ccivil\\_03/\\_ato2015-2018/2017/lei/l13425.htm](https://www.planalto.gov.br/ccivil_03/_ato2015-2018/2017/lei/l13425.htm)

Moreover, Alves and Soares (2013) show that infrastructure conditions and the institutions' complexity positively correlate with better results in standardized test scores and that students with less privileged socioeconomic backgrounds tend to exhibit lower score results. Also, Bellei (2009) argues that full-time programs have more significant positive effects on scores of rural students, students who attended public schools, and students situated in the upper part of the distribution of the scores.

In his analysis, Fernandes (2019) states that *high-stakes* standardized test scores can promote negative externalities in the Education system, related to: a) reduction of curriculum to what appears in the tests; b) the school administration may direct the use of strategies to remove students who are not performing as expected or perceived as a performance risk on standardized test scores; c) focus on students classification and ranking. Rostirola (2021) points out that not only the use of *high stake* standardized test scores but the system of accountability may result in gaming and ineffective regulation, with an intense charge on results and the teachers being accountable for results not directly connected to their actions.

Although socioeconomic inequality analysis is very relevant, it is also essential to reflect on the relationship between schooling effectiveness and inequality, understood as the dispersion of the effectiveness among the unities. Usually, increases in the effectiveness of an Education system (measured by standardized test scores) tend to happen centered on schools of a specific type, schools under similar conditions, or even schools that already have higher scores (Bellei, 2009). The full-time implementation for specific students could mean that the inequality between them and those in regular part-time schools will increase.

Kuznets Curve – CK (Kuznets, 1955) offers a way to comprehend the relationship between effectiveness and inequality. Based initially on countries' economic growth and income concentration, CK describes an inverted U-curve correlating these two variables. In the first moment, economic growth increases economic inequality and decreases after a threshold point.

With a focus on schooling expansion and inequality level, Ram (1990) points to a complex relationship between the level of Education of the individuals measured by years of educational attainment (schooling effectiveness) and the measures of dispersion of this educational attainment (schooling inequality)<sup>4</sup>. Increasing the

---

<sup>4</sup>Even considering differences in socioeconomic and schooling inequalities (i.e., the dispersion of the effectiveness among the unities), following Ram's bibliographical survey (1990), there is evidence of a "direct relation between inequality of schooling and inequality of income" (p. 266). The analysis of schooling inequality can be related to socioeconomic inequality. Nevertheless, due to Pernambuco's high number of enrollments in full-time schools, investigation of relations between schooling inequality and socioeconomic inequality may result in different findings since the treatment effect is closely reaching all the students.

individual Education level negatively impacts the educational system's inequality level until a critical point where inequality starts to decrease, and the educational level works as a tool to reduce inequality.

Many authors have revisited the CK from different perspectives, observing variations on the "U shape". The relationship between happiness and inequality (Ram, 2017) has a U-inverted shape; the level of development and income inequality in the United States has a relationship in a regular-U shape (Blanco; Ram, 2019); the relationship between per capita income growth and inequality in Brazil tends to an inverted-u shape only for those up to a specific income (Linhares *et al.*, 2012); the relationship between the average schooling level and schooling dispersion may assume an inverted-U shape when dispersion is measured in terms of standard deviation, and a regular-U shape when using the Gini coefficient (Shukla; Mishra, 2019).

Neves and Almeida (2016) have incremented Ram's analysis (1990), adapting Kuznets's (1955) hypothesis, adopting the city as the unit level, the *Prova Brasil*<sup>5</sup> as the efficiency index, and socioeconomic variables<sup>6</sup> as control. They found that the relationship between increasing effectiveness and inequality has a regular-U shape. Due to the small magnitude of the effect of the quadratic term of proficiency, the relation could even be considered linear (monotone and negative).

This paper aims to analyze the relationship between schooling effectiveness and schooling inequality in Pernambuco, Brazil, using state standardized tests to investigate the relationship between full-time journeys and inequality, incrementing the analyses made by Neves and Almeida (2016) with a focus on full-time schools and specific characteristics of the schools and using control variables that vary across time and others that are stable over time. We used the age-grade distortion index as a control, since the more significant the dispersion in terms of age in the classroom, the lower the average proficiency (Portella; Busmann; Oliveira, 2017).

Regarding the analyzed data, Prova Brasil imposed some limitations on the panel analysis, since it is biannual. Alternatively, we used annual data of the 12th-grade level from the *Sistema de Avaliação Educacional de Pernambuco* (Saepe) (Educational Assessment System of Pernambuco), from the Board of Education and Sport from the State of Pernambuco (SEE-PE), and data from Pernambuco at *Censo da Educação Básica* (the census of primary Education) between 2008 and 2021<sup>7</sup>.

---

<sup>5</sup>The Prova Brasil (Brazil test) is a national standardized test that occurs every two years. It is a component of the Basic Education Development Index (Ideb).

<sup>6</sup>Students, teachers, and school profiles.

<sup>7</sup>In 2020, due to pandemics, there was no test. Also, since some city variables such as GDP are not fully available, we used preliminary GDP data. 2021 was included to maintain the study and the analysis as up to date as possible.

SAEPE is Pernambuco State own educational system to evaluate all senior students at the primary level. The exam follows Item Response Theory (IRT) and occurs annually, involving 9th-grade and 12th-grade students with Portuguese Language and Mathematics items. It is a simulation and monitoring strategy for the Basic Education Assessment System (Saeb)<sup>8</sup>, and to the Programme for International Student Assessment (Pisa).

The focus on Pernambuco's case is because of its extensive process of implementing full-time schools, which, starting in 2008, reached the universalization of municipal provision in 2016. The public school system has four types of schools according to the extension of the school day: Integral (schools with a five days full-time journey), Regular (part-time schools with no extended days), partial (schools with three days of full-time journey), and technical full-time school (technical high schools with five days full-time journey that combines propaedeutic and technical subjects).

This paper has the following structure: i) presentation of the research method, including Automated Exploratory Data Analysis - autoEDA theory and practice and panel data analysis theory and practice; ii) analysis description, with data preparation, autoEDA, and schooling inequality using panel data analysis, including model selection and outcomes; iii) discussion of the findings, focusing on the shape of the relationship between effectiveness and inequality, and exploration of the uniform variables and varying over time variables that relate to the inequality; iv) conclusion, presenting data and study limits, and possibilities for future work.

## 2 Research Method

In this study, we used panel data: the same individuals have a set of attributes repeatedly measured in different periods/times (Mesquita; Fernandes; Figueiredo Filho, 2021). In our case, data from Pernambuco State (Brazil) public high school institutions, on standardized tests, from 2008 to 2021, aggregated by development region<sup>9</sup> of Pernambuco.

With the original dataset, we performed a process of Automated Exploratory Data Analysis - autoEDA. It involves using specific computer packages, libraries,

---

<sup>8</sup>The standardized test was named "Prova Brasil" until 2018.

<sup>9</sup>Pernambuco administration is divided into 3 macroregions, 5 mesoregions, 12 regions, and 19 microregions. These divisions consider aspects like climate, vegetation, economy, et cetera. In this paper, we used the granularity of twelve regions because: 1) the macroregions and mesoregions produce very large unities, distorting the perception of dispersion and inequality, and 2) the microregions produce very small unities for metropolitan regions. Another possibility would be to use the sixteen educational administration divisions. However, it reduces the available data since it is the twelve regions plus the division of the metropolitan region into four educational administration regions - which do not have available data such as population, income, et cetera.

or programs to accelerate or even automate the actions of data description and quality verification, using summaries and data visualization to understand the set better (Staniak; Biecek, 2019).

We executed the autoEDA using R, RStudio, and the funModeling package (Casas, 2019, 2023), in three steps: (i) quality verification for the proportion of zeros, not available, type, unique values, and wrong imputation, (ii) categorical variables numeric and visual analysis of frequency and distribution, (iii) numeric variables analysis of central tendencies, and et cetera.

Considering that unbalanced panels are suited to bias if the information gap is systemic (Mesquita; Fernandes; Figueiredo Filho, 2021), it was necessary to do specific tests to observe if data were missing (or not) at random (Kabacoff, 2011).

Since our panel data related numeric variables (age-grade distortion and standardized test scores) with categorical (type of institution, duration of journey), we chose a correlation method to evaluate if missing values were systemic. For example: would it be that age-grade distortion was not available for rural schools? If we detect a correlation between missing values on age-grade distortion and rural schools (or any specific association), it would indicate that data were not missing randomly.

Using the shadow matrix correlation technique - in which the rows are the variables and the columns represent the missingness - it is possible to identify if data is missing/not missing at random, by observing the relation between rows and columns (Kabacoff, 2011). The process showed that data were missing randomly.

After aggregation, the final dataset remained cross-section dominant but with a lower  $n$  (16) and changed from unbalanced to balance since the number of regional offices of Education did not change. We performed a panel regression with the final dataset, a balanced and cross-section dominant panel, using R, RStudio, and the plm package (Croissant; Millo, 2008, 2018).

Panel regression is a modification of the traditional linear regression  $Y_i = \alpha + \beta_1 X_{i1} + \dots + \beta_p X_{ip} + \varepsilon_i$ , in which (i) the time component “t” is added, and (ii) the composite error “ $\varepsilon$ ” is broken into fixed error “ $\mu_i$ ” and variable error “ $v_{it}$ ”, resulting in  $Y_{it} = \alpha + \beta_1 X_{it1} + \dots + \beta_p X_{itp} + \mu_i + v_{it}$  (Croissant; Millo, 2008, 2018; Mesquita; Fernandes; Figueiredo Filho, 2021).

Since panel regression combines units and times, it may fall under time series problems (like serial correlation) or sectional problems (such as cross-sectional

dependence) and is also related to linear model assumptions (no perfect collinearity, for example) (Mesquita; Fernandes; Figueiredo Filho, 2021).

We created the panel regression model following the contributions present in Colonescu's (2016), Croissant and Millo's (2008, 2018), and Mesquita, Fernandes and Figueiredo Filho, (2021) works. That is, we estimate four regressions using the basic panel model methods: (i) pooled, (ii) first differences - FD, (iii) fixed effects - FE, and (iv) random effects - RE.

The first method (pooled) is close to the traditional estimation of a linear model since no specific characteristics of units are considered, and it expects that independent variables have all the relevant information, resulting in only one intercept " $\alpha$ " and the undivided error " $\varepsilon$ ".

The second method (FD) is best used with panels with time problems because subtracting the previous period reduces serial correlation and non-stationarity; and reduces variability and available information.

With the third (FE), the effects of the independent variables are fixed, regardless of the unit (in this case, gre), while the intercept is different for each unit. It is essential to say that FE can be considered the standard variation for panel data since it focuses on the variable aspects of units (Croissant; Millo, 2018; Mesquita; Fernandes; Figueiredo Filho, 2021).

Finally, the last method (RE) considers that the effects of the independent variables are random, changing for each unit and time, which results in  $\mu_i$  and  $v_{it}$  being perceived as stochastic and not related to the independent variables, resulting in models that retain information from variables that are constant in the panel.

To choose an acceptable method, we followed the Croissant and Millo (2008) and Mesquita, Fernandes and Figueiredo Filho (2021) recommendations:

(i) Pooled vs. FE: analyze the intercepts distribution and use F-test, with the null hypothesis being that there are no significant effects (i.e., pooled is adequate);

(ii) Pooled vs. RE: Breusch-Pagan test, observing if (null hypothesis) unit-specific variance is zero (i.e., pooled is adequate);

(iii) FE vs. RE: Hausman test, that indicates if (null hypothesis) the unobserved variation from units is unassociated with the regressors. In case of an association,

only FE estimators will be consistent; in case of the absence of association, both models, FE and RE, are consistent;

(iv) FD vs. FE: Wooldridge first-difference-based test. Choosing FD or FE as a null hypothesis makes it possible to understand which method is more efficient. It is also essential to analyze the overall fit and regression metrics such as  $R^2$ .

Once the model is selected, it is necessary to test for (i) normal distribution of errors, (ii) serial correlation in the error term (not needed for RE), and (iii) cross-sectional dependence since events may occur and change all 12 development regions dynamics. It is possible to use robust variance-covariance matrix methods to address these problems and produce robust estimators (Beck; Katz, 1995; Driscoll; Kraay, 1998; Zeileis; Hothorn, 2002).

### 3 Materials and Results

In this section, we present the analysis description, divided in three steps: i) data preparation, including data cleaning and aggregation ; ii) autoEDA, exploring data patterns and data quality; and iii) the panel data analysis of schooling inequality, with model selection and outcomes.

#### 3.1 Data preparation

The dataset used in this study was collected through the Public Transparency Portal of the SEE-PE (process nº 57419/2022 and process nº 60776/2023). The available variables were: (1) the year of the test; (2) school code; (3) school name; (4) the type of journey, according to the extension of the school journey (five days full-time school, three days full-time school, part-time school, full-time technical school); and (5) schools Idepe. With these variables, we also created (6) the Idepe (Idepe<sup>2</sup>) quadratic term and the standard deviation of the Idepe.

We merged school information from the census of primary Education into the original data: (7) the school's city name, (8) the city's code on a national base, (9) the name of the regional educational office, (10) the development region, (11) the school city's localization (rural or urban), (12) the proportion of age-grade distortion from the 12th-grade students, (13) school with internet dummy, (14) school with night classes dummy, (15) school with classes for adults dummy, (16) total of students, (17) a total of female students, (18) a total of white students.



Following Neves and Almeida (2016) and Ram (1990), it was necessary to aggregate data to generate the proxy for inequality - standard deviation of the standardized test score, which entered the model as the dependent variable, since (i) the standard deviation was not available for schools, and (ii) the unbalanced data panel could increase bias (Mesquita; Fernandes; Figueiredo Filho, 2021).

It is important to remember that Neves and Almeida (2016) aggregate data by city. However, when we analyze data from 12th-grade students, the states fund and manage high schools in Brazil. Also, this aggregation is impossible, considering that many cities have only one high school.

Before aggregation (original dataset), the panel was cross-section dominant and unbalanced (Mesquita; Fernandes; Figueiredo Filho, 2021), i.e., the measures were not available for all individuals in all periods - unbalanced - and the number of individuals was more significant than the number of periods ( $n > T$ ) - cross-section dominant.

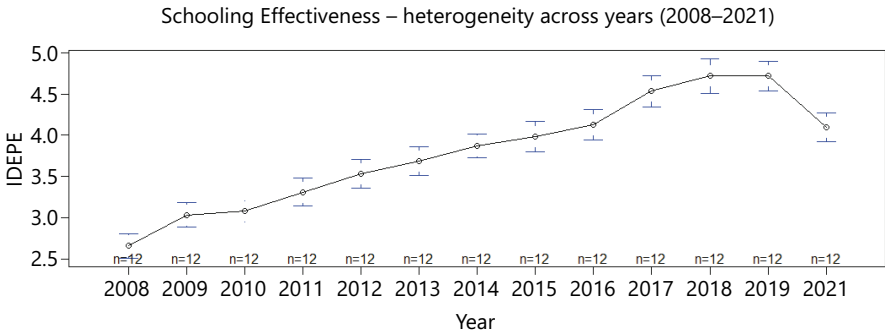
Finally, after aggregation by development region, we merged the previous school data with the city's (19) GDP and (20) population. We created the variables (21) GDP per capita, (22) the populational rate of schools with a five days full-time journey, (23) the populational rate of schools with a part-time journey, (24) the populational rate of schools with three days full-time journey, (25) populational rate of full-time technical schools, (26) populational rate of schools with night classes, (27) populational rate of urban schools, (28) populational rate of schools with internet access, (29) populational rate of schools with classes for adults. The final database was analyzed through the autoEDA method, focusing on quality verification and pattern identification.

### **3.2 AutoEDA**

Firstly, we observed if the values were missing at random, using shadow matrix correlation. This technique isolates missed values and then observes if these values correlate with the other variables. In the present case, we verify that the correlation had low values (between -0.27 and + 0.16), showing that the values were missing at random and had no specific relation with the variable's values. Excluding the missing values, corresponding to 8.5% of the original data, was possible.

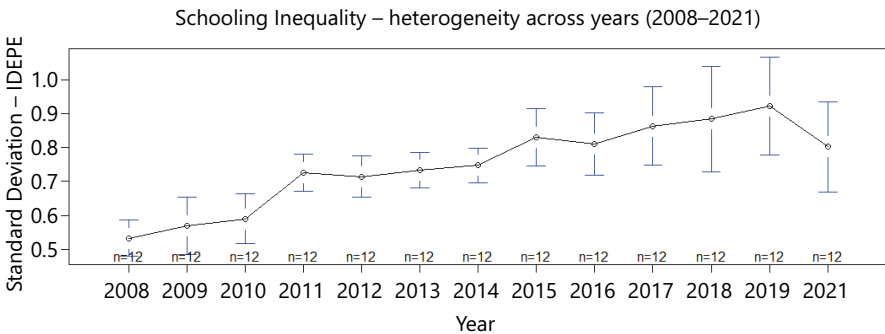
Secondly, we analyzed the trajectory of Schooling Effectiveness and Schooling Inequality using the Idepe and its standard deviation. Figure 1 shows the overall mean, and the lower and upper limits of Idepe, and Figure 2 shows the standard deviation of the Idepe, both for all 12 development regions, from 2008-2021.

**Figure 1** - The overall mean and the lower and upper limits of Idepe for Pernambuco's all 12 development regions from 2008-2021



Source: Own elaboration (2024)

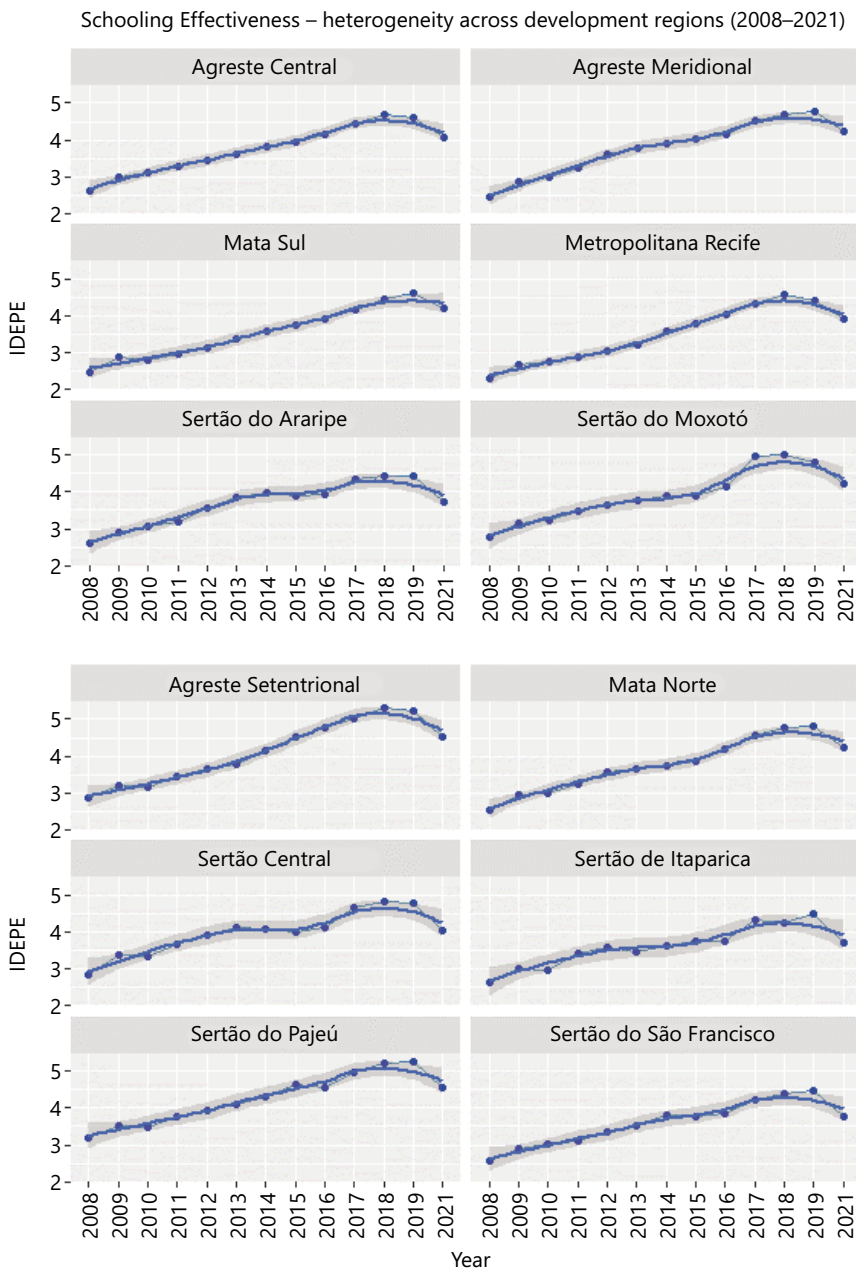
**Figure 2** - The standard deviation of the Idepe for Pernambuco's all 12 development regions from 2008-2021



Source: Own elaboration (2024)

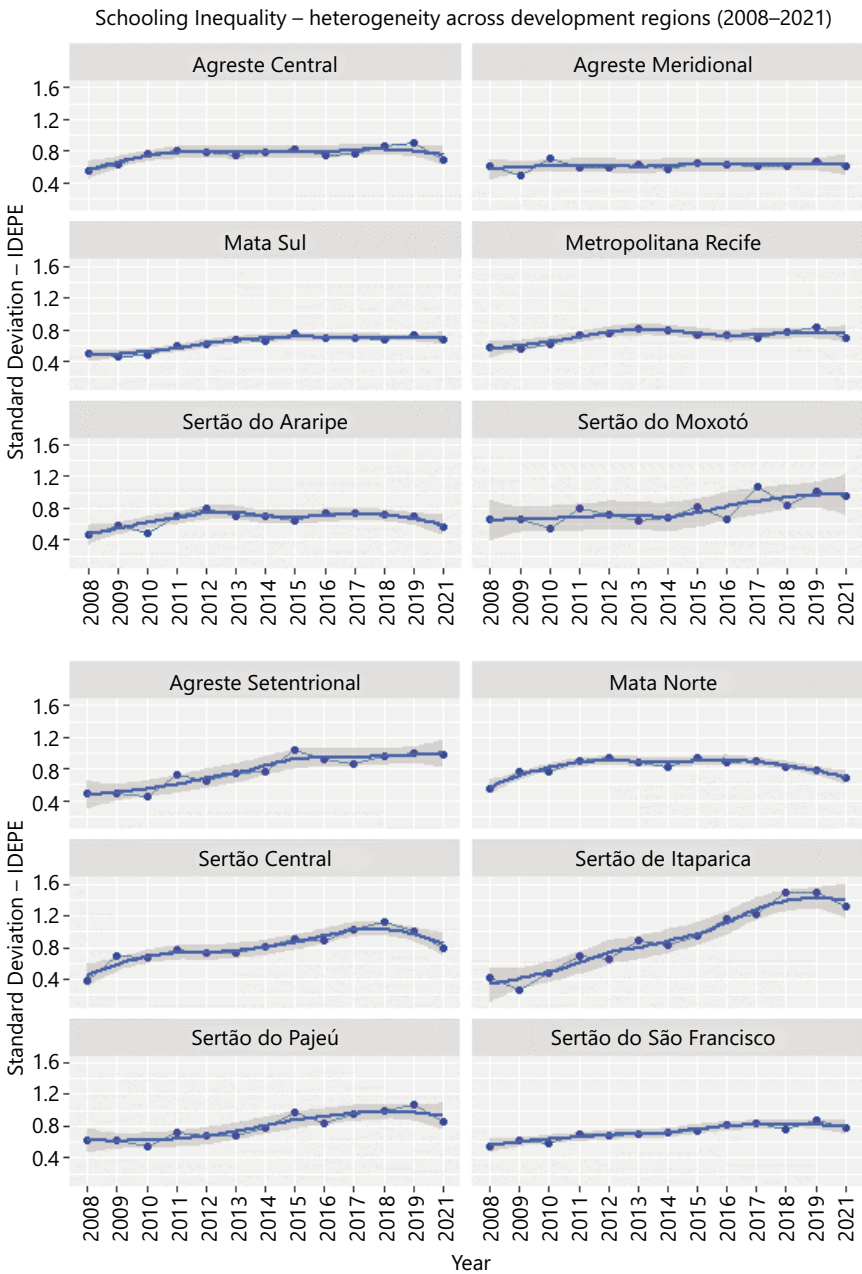
After this, we explored the trajectory of Schooling Effectiveness and Schooling Inequality within each development region across the years. Figure 3 shows multi panels with the mean of Idepe, and Figure 4 the standard deviation of the Idepe, both for each of the 12 development regions and respective trend lines, from 2008-2021.

**Figure 3** - Multi panels with the mean of Idepe for Pernambuco's all 12 development regions from 2008-2021



Source: Own elaboration (2024)

**Figure 4** - The standard deviation of the Idepe for Pernambuco’s all 12 development regions from 2008–2021



Source: Own elaboration (2024)

### 3.3 Schooling Inequality

The schooling inequality analysis in this paper follows Ram's (1990) paper, which appropriates the CK in Education. The main idea is that increasing schooling effectiveness may lead to increasing schooling inequality. Theoretically, the relationship is curvilinear; with the increase in effectiveness, the inequity would grow until it reaches a maximum point, from where it would reduce.

Since the Idepe is the used metric for Education effectiveness, we used the standard deviation of the Idepe as a proxy for schooling inequality, and the idepe and its quadratic term to test the linear and/or quadratic relation (positive or negative) between increasing effectiveness and expanding schooling inequality (Ram, 1990; Neves; Almeida, 2016).

As control variables, we used:

- A set of regional development: (1) GDP *per capita*, (2) schools with internet *per capita*, and (3) urban schools *per capita*;
- a set of extended journey types to control for school effectiveness: (4) schools with a five days full-time journey *per capita*, (5) schools with a part-time journey *per capita*, (6) schools with three days full-time journey *per capita*, (7) full-time technical schools *per capita*;
- a set of schools' classes specifications to control for the complexity of Education: (8) schools with night classes *per capita*, (9) schools with classes for adults *per capita*;
- a set of student social characteristics considering enrollment share to control students' profile: (10) share of whites, (11) share of women, and (12) share of age-grade distortion for 126h-grade students.

Considering the development region (rd) as the space statistic unit and the year of the test as the time unit, we arrived at the equation below:

$$SD\_IDEPE_{it} = \alpha + \beta_1 X_{it1} + \dots + \beta_{12} X_{it12} + \mu_i + \nu_{it}$$

With the given equation, we build four model methods: (i) pooled, (ii) first differences - FD, (iii) fixed effects - FE, and (iv) random effects - RE, using

R, RStudio, and the plm package (Croissant; Millo, 2008). We displayed the complete models in the appendix.

After model estimation, we performed the Croissant and Millo (2008) and Mesquita, Fernandes and Figueiredo Filho (2021) sequence of tests to decide what model was adequate – as show in Table 1 below:

- (i) F-test for Pooled vs. Fixed Effects. Alternative: significant effects (Fixed Effects are adequate);
- (ii) Breusch-Pagan Test for Pooled vs. Random Effects. Alternative: significant effects (Random Effects is adequate);
- (iii) Hausman Test for Random Effects vs. Fixed Effects: Alternative: one model is consistent (Fixed Effects estimators will be consistent);
- (iv) Wooldridge first–difference–based Test for First-Difference vs. Fixed Effects. Alternative: serial correlation in differenced errors (Fixed Effects are adequate since we put First-Difference as Null hypothesis).

**Table 1** - Hypothesis Test for Panel Data Model Selection

Method	Statistics	P-value	Alternative
F Test	6.763841	0.0000000	significant effects
Breusch-Pagan	13.098660	0.0014311	significant effects
Hausman Test	123.885897	0.0000000	one model is inconsistent
Wooldridge's first-difference test	12.580157	0.0005429	serial correlation in differenced errors

Source: Own elaboration (2024)

Upon identifying that Fixed Effects were adequate, we performed two procedures: i) reorganize variables searching for best fit; ii) follow up analysis to see if the model residuals were normal and if there was a serial correlation or cross-sectional dependence.

Specifically, we present the final model with Idepe, Idepe<sup>2</sup>, Part-time Schools, Technical Full-time Schools, Urban Schools, and Scholls with Internet variables.

We performed the Shapiro-Wilk normality test, Wooldridge’s test for serial correlation in FE, and the Pesaran CD test for panel cross-sectional dependence – as show in Table 2 below.

**Table 2** - Hypothesis Test for Panel Data Model Assumption

	Method	Statistics	p_value	Alternative
W	Shapiro-Wilk	0.995983	0.9506671	Non-normally distributed
F	Wooldridge’s Test	3.106286	0.0801421	serial correlation
Z	Pesaran CD Test	-2.520897	0.0117056	cross-sectional dependence

Source: Own elaboration (2024)

The residuals have a normal distribution and no serial correlation, but there is cross-sectional dependence, which demands robust estimators, like Beck and Katz’s (1995) Panel Corrected Standard Errors (PCSE). The Table 3 shows the final model with original and robust estimators.

**Table 3** - Original and Robust Estimators

Schooling Inequality - Fixed Effects		
	<i>Dependent variable:</i>	
	Standard Deviation – IDEPE	
	<i>Panel linear</i>	<i>Coefficient Test</i>
	Fixed Effects	PCSE
	(1)	(2)
Idepe	-0.658*** (0.199)	-0.658*** (0.235)
Idepe <sup>2</sup>	0.094*** (0.024)	0.094*** (0.027)
Part-time Schools	0.020** (0.009)	0.020** (0.009)
Technical Full-time Schools	0.121** (0.057)	0.121* (0.070)
Urban Schools	-0.060*** (0.015)	-0.060*** (0.019)

Continue

Continuation

<b>Schooling Inequality - Fixed Effects</b>		
Schools with Internet	0.061*** (0.008)	0.061*** (0.008)
Observations	156	
R <sup>2</sup>	0.587	
Adjusted R <sup>2</sup>	0.492	
F Statistic	29.891*** (df = 6; 126)	

Source: Own elaboration (2024)

\*p &lt; 0.1; \*\*p &lt; 0.05; \*\*\*p &lt; 0.01

## 4 Discussion

As seen in Figure 1, Schooling Effectiveness has increased over the years. Also, as shown in Figure 2, Schooling Inequality has increased over the years in the overall mean of development regions. It indicates that advances in effectiveness are generally followed closely by advances in inequality.

However, Figures 3 and 4 indicate that (i) both effectiveness and inequality have substantial variation among different development regions and (ii) although effectiveness has an everlasting ascendent trend for all regions, inequality follows different patterns across the regions and the years.

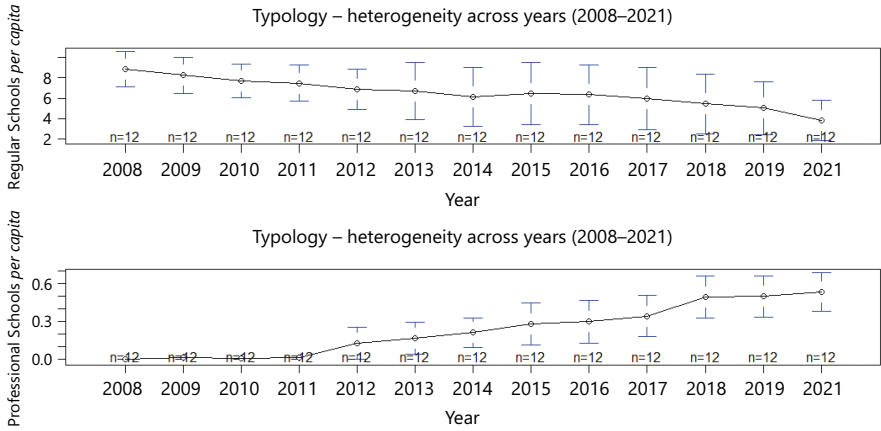
The panel data model was robust to the hypothesis test applied and showed an excellent capacity to explain the variability (with Adjusted R<sup>2</sup> of 0.492), being practical in helping to understand better the effects of different aspects of effectiveness over inequality.

Considering the effectiveness vs. inequality relation, the positive coefficient of the quadratic term of Idepe and the negative coefficient of Idepe indicate that the relationship follows a regular-U shape, in which, as effectiveness grows, inequality decreases until a minimum point from where it starts to increase.

Regarding typology, development, and localization, it is noticeable that the inequality is higher in regions where we find more part-time schools without extended journeys, regions with more technical full-time schools, and regions with more schools with internet. On the other hand, regions with more urban schools tend to have lower inequality. It is then necessary to examine the trajectory of these variables across time.



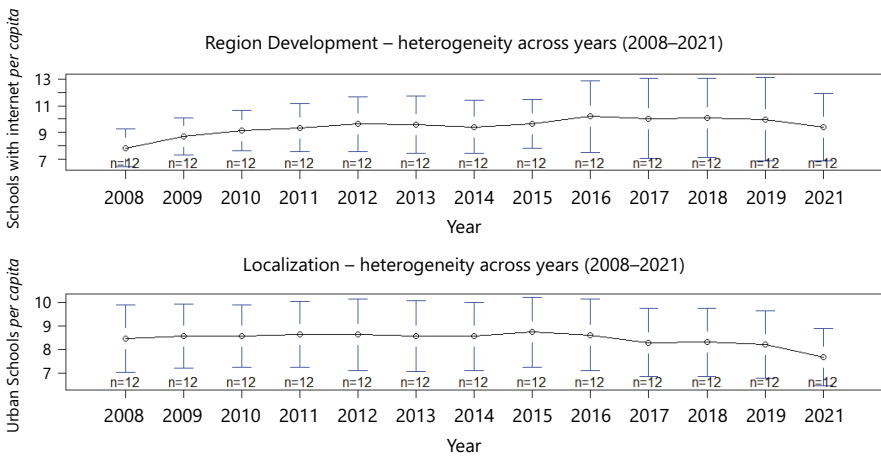
**Figure 5** - Number of part-time and technical full-time schools in Pernambuco’s all 12 development regions from 2008-2021<sup>10</sup>



Source: Own elaboration (2024)

Figure 5 shows that typology varies across time, with the total of part-time schools (no extended journey) decreasing over the years, while the total of full-time technical schools has increased during the same period.

**Figure 6** - Number of urban schools and schools with no internet access in Pernambuco’s all 12 development regions from 2008-2021



Source: Own elaboration (2024)

<sup>10</sup> The label “Professional School” in Figure 5 represents the Technical High School described in the paper.

On the other hand, Figure 6 shows that the schools with internet and the urban schools are very stable over time. The first showed an increase and stabilized, while the second oscillated around a central value since the beginning of the period.

In sum, we can say that (i) effectiveness and inequality are growing across time, (ii) the relation between the two aspects follows a regular-U shape, (iii) some typology variables are changing across time that affects inequality positively, (iv) some other aspects are more stable across time but may vary across regions, which also affects inequality, (v) in general, regions with more extended journey schools tend to show smaller schooling inequality.

## 5 Conclusion

Considering the previous studies on full-time Education in Brazil, as Neves and Almeida (2016), we identified that Kuznets-hypothesis on Education is also present in using standardized test scores as effectiveness, noticing that this type of Education is not salvationist (Castanho; Mancini, 2016; Silva; Jófili, 2022), as it comes with its contradictions and externalities

It is possible to infer that the equity of the result is more connected to the effects of the diversity of school typology (quite variable over the years), the location of schools (fixed over time), and the way that a region is developed (which also may be constant over time). These findings are comparable to Blanco and Ram (2019), in which the relationship has a regular-U shape.

In the case of Pernambuco and its trajectory of increase in the number of extended journey schools, development regions with more urban schools and a more homogeneous school typology of extended journey schools tend to present better equity of results. Equity that, for the case in question, is also influenced by the achievement of the result itself, i.e., by the effectiveness of the Education. So, policymakers should put effort to create policies that address not only socioeconomic inequalities, but also schooling inequalities, since the expected course of developing policies seems to be to increase even more the results of better units.

One possible limitation of this study relates to the assumption that the standardized test remained the same - or at least with minimum conditions - across all years of analysis. That is, since IRT has robust premises that are not directly verified with the available data, we assumed that all years on the dataset followed the expected IRT conditions. However, gaming is always possible, i.e., some schools

may be “playing with the rules” to produce the best results possible (Hood, 2007; Segatto; Abrucio, 2017). Nevertheless, in both cases, the autoEDA (especially the missing at-random analysis) and the panel data models do not indicate relevant problems, leading to the belief that variations due to changes in specification tests or gaming are stochastic.

Another limitation of the studies that apply Kuznets-hypothesis to Education is related to the measure of inequality and the use of controls. As Shukla and Mishra (2019) identified, the relationship between effectiveness and inequality may change signals depending on the measure used. Also, the association between inequality and social, economic, and typology aspects may change due to study design choices and the disponibility of the data<sup>11</sup>.

To better address these questions, future studies would include controls about teachers and families while retaining other controls used here, especially typology, because of the relationship between extended journey and effectiveness (Araújo *et al.*, 2020; Battistin; Meroni, 2016; Fukushima; Quintão; Pazello, 2022; Huebner; Kuger; Marcus, 2017; Rosa *et al.*, 2020; Schüpbach, 2014). Another possibility is to use data on the student level, aggregated by class or even school - which is currently unavailable due to personal data protection. It would also be ideal for observing the relation between effectiveness and equality using other measures since each one captures different publics of Education: years of educational attainment measures general Education, but standardized tests, as Idepe, measure the 12th-grade covering only mathematics and language. Finally, it would be interesting to model using different measures of dispersion (standard deviation, Gini index, et cetera).

---

<sup>11</sup> Brazil is facing a restriction on available data on the student level because of the General Data Protection Law (LGPD). The *Instituto Nacional de Estudos e Pesquisa Educacionais Anísio Teixeira* (Inep) and the Federal University of Minas Gerais (UFMG) conducted a study that estimated the chance of data reidentification at 87%. After the study, Inep proceeded to restrict data on the student level and started to offer data on the school level, following legal orientation as publicized in Technical Note 5/2021.

## **Desigualdade educacional nos exames de larga escala e a jornadas escolares extendidas: uma análise da rede pública de ensino médio de Pernambuco (Brasil)**

### **Resumo**

*Este artigo analisa a relação entre jornadas em tempo integral e desigualdade escolar em Pernambuco, Brasil. Usando resultados de testes padronizados no nível escolar, testamos a hipótese da curva em U invertido proposta inicialmente por Simon Kuznets em 1955 e adaptada com foco na expansão e desigualdade escolar por Rati Ram em 1990. Para isso, construímos uma análise de dados em painel, com dados agregados por região e notas em testes padronizados como variável de saída. Originalmente, as hipóteses descrevem uma curva em formato de U invertido correlacionando eficácia e desigualdade escolar. Ou seja, num primeiro momento, a expansão da escolaridade aumenta a desigualdade e depois a diminui a partir de um ponto crítico. No entanto, descobrimos que a relação segue uma forma de U regular, com uma diminuição inicial e um aumento da desigualdade após o ponto crítico. Também é inferido que a equidade do resultado está mais ligada aos efeitos da diversidade da tipologia escolar, da localização das escolas e da forma como a região é desenvolvida.*

**Palavras-chave:** Ensino Integral. Desigualdade. Eficácia Educacional.

## **Desigualdad educativa en exámenes masivos y jornadas escolares extendidas: un análisis del sistema de educación secundaria pública en Pernambuco (Brasil)**

### **Resumen**

*Este artículo analiza la relación entre la jornada escolar a tiempo completo y la desigualdad escolar en Pernambuco, Brasil. Usando pruebas estandarizadas a nivel escolar; probamos la hipótesis de la curva en U invertida propuesta por primera vez por Simon Kuznets en 1955 y adaptada con un enfoque en la expansión escolar y la desigualdad por Rati Ram en 1990. Para esto, construimos un análisis de datos en panel, con datos agregados por región y puntuaciones de pruebas estandarizadas como variable de salida. Originalmente, la hipótesis describe una curva de correlación en forma de U invertida entre la eficacia escolar y la desigualdad. Es decir, en un primer momento, la expansión de la escolaridad aumenta la desigualdad y luego la disminuye a partir de un punto crítico. Sin embargo, encontramos que la relación sigue una forma de U regular, con una disminución inicial y un aumento en la desigualdad después del punto crítico. También se infiere que la equidad del resultado está más ligada a los efectos de la diversidad de tipología escolar, la ubicación de las escuelas y la forma de desarrollo de la región.*

**Palabras clave:** Escuelas de Tiempo Completo. Desigualdad. Eficiencia Escolar.

## References

- AGÜERO, J. *et al.* Do more school resources increase learning outcomes? Evidence from an extended school-day reform. [S. l.]: Institute of Labor Economics, 2021. (IZA DP, n. 14240).
- ALVES, M.; SOARES, J. Contexto escolar e indicadores educacionais: condições desiguais para a efetivação de uma política de avaliação educacional. *Educação e Pesquisa*, São Paulo, v. 39, n. 1, p. 177-194, mar. 2013. <https://doi.org/10.1590/S1517-97022013000100012>
- ARAÚJO, D *et al.* Do extended school day programs affect performance in college admission tests? *Brazilian Review of Econometrics*, Rio de Janeiro, v. 40, n. 2, p. 232-266, 2020. <https://doi.org/10.12660/bre.v40n22020.81749>
- BAE, S.; CHO, E.; BYUN, B. Stratification in extended education participation and its implications for education inequality. *IJREE–International Journal for Research on Extended Education*, [s. l.], v. 7, n. 2, p. 160-177, 2019. <https://doi.org/10.3224/ijree.v7i2.05>
- BATTISTIN, E.; MERONI, E. Should we increase instruction time in low achieving schools? Evidence from Southern Italy. *Economics of Education Review*, Amsterdam, v. 55, p. 39-56, Dec. 2016. <https://doi.org/10.1016/j.econedurev.2016.08.003>
- BECK, N.; KATZ, J. What to do (and not to do) with time-series cross-section data. *American Political Science Review*, v. 89, n. 3, p. 634-647, Sep. 1995. <https://doi.org/10.2307/2082979>
- BELLEI, C. Does lengthening the school day increase students' academic achievement? Results from a natural experiment in Chile. *Economics of Education Review*, Amsterdam, v. 28, n. 5, p. 629–640, Oct. 2009. <https://doi.org/10.1016/j.econedurev.2009.01.008>
- BLANCO, G.; RAM, R. Level of development and income inequality in the United States: Kuznets hypothesis revisited once again. *Economic Modelling*, London, v. 80, p. 400-406, Aug. 2019. <https://doi.org/10.1016/j.econmod.2018.11.024>
- CASAS, P. *Data science live book*. [S. l.: s. ed.], 2019. Available from: <https://livebook.datascienceheroes.com/>. Access in: 2023 Apr. 20.

CASAS, P. *funModeling (version 1.9.4)*: exploratory data analysis and data preparation Tool-Box. [S. l.: s. ed.], 2023. Available from: <https://cran.r-project.org/web/packages/funModeling/funModeling.pdf>. Access in: 2023 Apr. 20.

CASTANHO, M.; MANCINI, S. Educação integral no Brasil: potencialidades e limites em produções acadêmicas sobre análise de experiências. *Ensaio: Avaliação e Políticas Públicas em Educação*, Rio de Janeiro, v. 24, n. 90, p. 225-248, jan./fev. 2016. <https://doi.org/10.1590/S0104-40362016000100010>

COLONESCU, C. *Principles of econometrics*. Boston: Pearson Education, 2016.

COSTA, M.; KOSLINSKI, M. Escolha, estratégia e competição por escolas públicas. *Pro-posições*, Campinas, v. 23, n. 2, p. 195-213, ago. 2012. <https://doi.org/10.1590/S0103-73072012000200013>

CROISSANT, Y.; MILLO, G. Panel data econometrics in R: the plm package. *Journal of Statistical Software*, Innsbruck, v. 27, n. 2, p. 1-43, July 2008. <https://doi.org/10.18637/jss.v027.i02>

CROISSANT, Y.; MILLO, G. *Panel data econometrics with R*. Hoboken: John Wiley & Sons, 2018.

DRISCOLL, J.; KRAAY, A. Consistent covariance matrix estimation with spatially dependent panel data. *Review of Economics and Statistics*, Cambridge, v. 80, n. 4, p. 549-560, Nov. 1998.

FERNANDES, D. Avaliações externas e aprendizagens dos alunos: uma reflexão crítica. *Linhas Críticas*, Brasília, DF, v. 25, n. 1, p. 74-90, 2019. <https://doi.org/10.26512/lc.v25.2019.24579>

FUKUSHIMA, I.; QUINTÃO, G.; PAZELLO, E. Impacts of a full-time school program on learning, school's composition and infrastructure: the case of public schools in the state of São Paulo-Brazil. *Estudos Econômicos (São Paulo)*, v. 52, n. 4, p. 809-850, Oct./Dec. 2022. <https://doi.org/10.1590/1980-53575244ige>

HOOD, C. Public service management by numbers: why does it vary? Where has it come from? What are the gaps and the puzzles? *Public Money & Management*, [s. l.], v. 27, n. 2, p. 95-102, 2007. <https://doi.org/10.1111/j.1467-9302.2007.00564.x>

HUEBENER, M.; KUGER, S.; MARCUS, J. Increased instruction hours and the widening gap in student performance.

*Labour Economics*, Amsterdam, v. 47, p. 15-34, Aug. 2017.

<https://doi.org/10.1016/j.labeco.2017.04.007>

KABACOFF, R. *R in action: data analysis and graphics with R and Tidyverse*. Nova Iorque: Manning, 2011.

KAWAHARA, L. *Understanding the impacts of a full-time schooling program*. Dissertação (Mestrado em Economia de Empresas) – Faculdade de Economia, Universidade de São Paulo, São Paulo, 2019.

KOSLINSKI, M.; ALVES, F.; LANGE, W. Desigualdades educacionais em contextos urbanos: um estudo da geografia de oportunidades

educacionais na cidade do Rio de Janeiro. *Educação &*

*Sociedade*, Campinas, v. 34, n. 125, p. 1175-1202, dez. 2013.

<https://doi.org/10.1590/S0101-73302013000400009>

KUZNETS, S. Economic growth and income inequality. *The American Economic Review*, Nashville, v. 45, n. 1, p. 1-28, 1955.

LINHARES, F. *et al.* A hipótese de Kuznets e mudanças na relação entre

desigualdade e crescimento de renda no Brasil. *Pesquisa Pesquisa e*

*Planejamento Econômico - PPE*, Instituto de Pesquisa Econômica Aplicada,

v. 42, n. 3, p. 403-432.

MESQUITA, R.; FERNANDES, A.; FIGUEIREDO FILHO, D. Uma

introdução à regressão com dados de painel. *Revista Política Hoje*, Recife,

v. 30, n. 1, p. 434-507, 2021. <https://doi.org/10.51359/1808-8708.2021.246522>

NEVES, L.; ALMEIDA, E. Qualidade e equidade na educação: a hipótese da

Curva de Kuznets Educacional. *A Economia em Revista*, Maringá, v. 24, n. 1,

p. 11-26, jul. 2016.

PORTELLA, A.; BUSSMANN, T.; OLIVEIRA, A. A relação de fatores individuais, familiares e escolares com a distorção idade-série no ensino

público brasileiro. *Nova Economia*, Belo Horizonte, v. 27, p. 477-509,

set./dez. 2017. <https://doi.org/10.1590/0103-6351/3138>

RAM, R. Educational expansion and schooling inequality: International evidence and some implications. *The Review of Economics*

*and Statistics*, Cambridge, v. 72, n. 2, p. 266-274, May 1990.

<https://doi.org/10.2307/2109716>

- RAM, R. Kuznets curve in happiness: a cross-country exploration. *Economic Modelling*, Amsterdam, v. 64, p. 272-278, Nov. 2017. <https://doi.org/10.1016/j.econmod.2017.06.006>
- ROSA, L. *et al.* The effects of public high school subsidies on student test scores: The case of a full-day high school in Pernambuco, Brazil. *Economics of Education Review*, Amsterdam, v. 87, p. 102201, 2022.
- ROSTIROLA, C. Dispositivos de accountability: efeitos sobre escolas públicas de ensino médio de Pernambuco. *Linhas Críticas*, Brasília, DF, v. 27, n. 1, p. 2-20, 2021. <https://doi.org/10.26512/lc.v27.2021.36450>
- SEGATTO, C.; ABRUCIO, F. A gestão por resultados na educação em quatro estados brasileiros. *Revista do Serviço Público*, Brasília, DF, v. 68, n. 1, p. 272-278, 2017. <https://doi.org/10.21874/rsp.v68i1.762>
- SCHÜPBACH, M. Extended education and social inequality in Switzerland: Compensatory effects? An analysis of the development of language achievement with regard to structural and process-related aspects of social background. *Journal for Educational Research Online*, Bielefeld, v. 6, n. 3, p. 95-114, 2014.
- SHUKLA, V.; MISHRA, U. S. Educational expansion and schooling inequality: testing educational Kuznets Curve for India. *Social Indicators Research*, New York, v. 141, n. 3, p. 1265-1283, Feb. 2019.
- SILVA, M.; JÓFILI, Z. O que dizem os atores estratégicos sobre a relação entre o Sistema de Avaliação Educacional do Estado de Pernambuco e a qualidade educacional? *Ensaio: Avaliação e Políticas Públicas em Educação*, Rio de Janeiro, v. 30, n. 115, p. 312-333, abr./jun. 2022. <https://doi.org/10.1590/S0104-403620220003002574>
- STANIAK, M.; BIECEK, P. *The landscape of R packages for automated exploratory data analysis*. arXiv preprint arXiv:1904.02101. [S. l.: s. ed.], 2019.
- VALÉRIA, S. Full time school in Brazil: policy, curriculum and pedagogic challenges. *Journal of Arts and Humanities*, [s. l.], v. 2, n. 2, p. 108-114, Mar. 2013. <https://doi.org/10.18533/journal.v2i2.74>
- VIDIGAL, C.; VIDIGAL, V. O impacto da ampliação da jornada escolar nos resultados acadêmicos: evidências do Brasil. *Educação Econômica*, [s. l.], v. 30, n. 4, p. 426-450, 2022.



VIEIRA, S. *et al.* Reações das políticas educacionais estaduais nas escolas: um estudo de caso em escolas do Ceará, Goiás, Pernambuco e São Paulo. *Cadernos Cenpec*, [s. l.], v. 6, n. 2, 2016. <http://dx.doi.org/10.18676/cadernoscenpec.v6i2.360>

ZEILEIS, A.; HOTHORN, T. Diagnostic checking in regression relationships. *Journal of Statistical Software*, Innsbruck, 2, n. 3, p. 1-20, 2002.



---

## Information about the authors

**Hugo Augusto Vasconcelos Medeiros:** PhD in Education from the Universidade Federal de Pernambuco (Pernambuco, Brazil). Public Manager at Secretaria de Planejamento, Gestão e Desenvolvimento Regional (Pernambuco, Brazil). Collaborating Researcher/Professor at Universidade Federal de Pernambuco (Pernambuco, Brazil). Contact: [hugoavmedeiros@gmail.com](mailto:hugoavmedeiros@gmail.com)

**Ruy de Deus e Mello Neto:** PhD in Education from the Universidade de São Paulo (São Paulo, Brazil). Professor at the Universidade Federal do Ceará (Ceará, Brazil). Professor at the *Mestrado Profissional em Avaliação de Políticas Públicas* (MAPP-UFC) (Ceará, Brazil). Contact: [ruydedeus@ufc.br](mailto:ruydedeus@ufc.br)

---

**Authors' contributions:** Hugo Augusto Vasconcelos Medeiros: Conceptualization, Formal Analysis, Methodology, Writing – original draft, Writing – review & editing, literature review, discussion of results and conclusions. Ruy de Deus e Mello Neto: Conceptualization, Data Collection, Investigation, Writing – original draft, Writing – review & editing, literature review, discussion of results and conclusions.

**Data, Instrument and Appendix A:** The entire data set, the description of the instrument items and Appendix A (Methods for Panel Data models) are published on [https://github.com/hugoavmedeiros/educacao\\_iniquidade](https://github.com/hugoavmedeiros/educacao_iniquidade)

**Conflict of interest in research:** The authors declare that they have no commercial or associative interest that represents a conflict of interest in relation to the manuscript.

**Funded research:** The research has no specific funding.